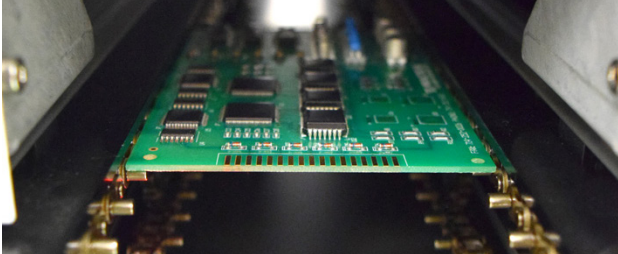




Infrared Heat Curing Chamber
DeltaTherm

POLY DISPENSING SYSTEMS
S Y S T E M E S D E D O S A G E I N D U S T R I E L

DeltaTherm Infrared Heat Curing Chamber



System Specifications

Power Requirements:

208 - 480 VAC, +/-10%, 50/60 Hz, 3

Maximum Panel Temperature:

260 C (500 F)

Curing Length:

1.2 m / 2.4 m / 3.7 m / 4.8 m
(4 ft / 8 ft / 12 ft / 16 ft)

Independent Heating Zones:

Programmable in two foot sections

Conveyor Speed:

0.03 m/min to 15.24 m/min
(0.1 ft/min to 50 ft/min)

Board / Pallet Width:

50 mm to 500 mm
(1.9 in to 19.6 in)

Component Clearance:

100 mm (4 in) top and bottom

Conveyor Height:

890 mm to 965 mm from floor
(35 in to 38 in, SMEMA standard)

Exhaust:

DeltaTherm 4': 200 CFM
DeltaTherm 8': 300 CFM
DeltaTherm 8' H: 140 CFM
DeltaTherm 12': 600 CFM
DeltaTherm 12' H: 210 CFM
DeltaTherm 16': 1000 CFM
DeltaTherm 16' H: 280 CFM
Alarm included

Certification:

CE

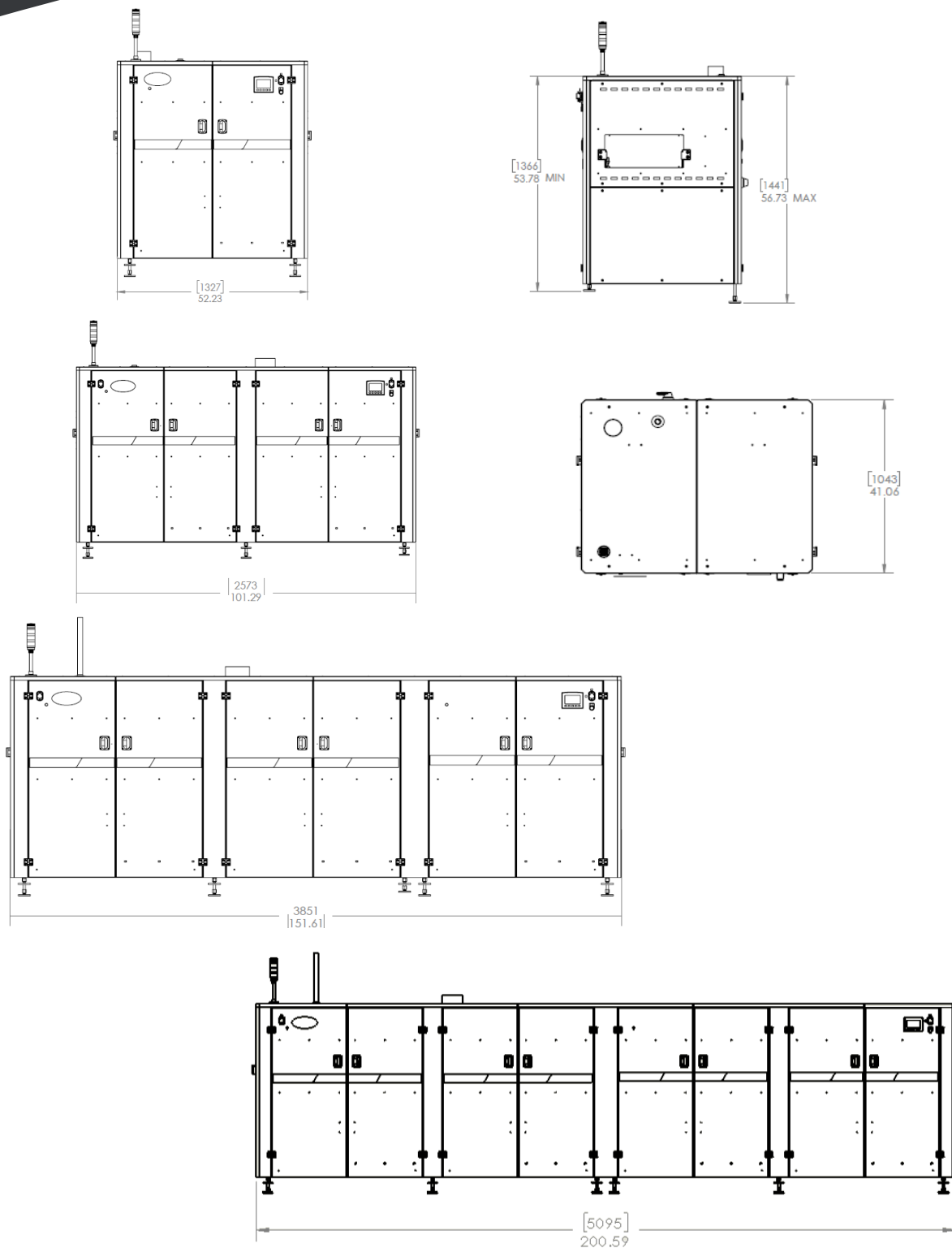
REV C 11/12/20

PVA's DeltaTherm utilizes infrared panels to efficiently cure adhesives and coatings in a controlled, heated environment. The DeltaTherm features a double-sided configuration and offers custom top and bottom heat profiling in each two foot section. Each infrared coated panel is constructed for easy cleaning and maintenance. An optional humidity control feature allows for further control of moisture cure applications.

The DeltaTherm has many integrated features including:

- Edge carrying, variable speed pin chain conveyor
- Rail expansion compensation
- SMEMA communications interface
- PLC controller
- OIT touch panel with display screen
- Four-inch top and bottom side component clearance
- Thermocouple process control with independent over temperature protection
- Optional humidity control

For more information, please contact POLY DISPENSING SYSTEMS at contact@polydispensing.com or (518) 371-2684.



All dimensions are provided in inches and millimeters.